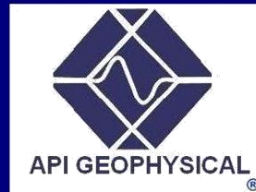




API GEOPHYSICAL
ACQUISITION - PROCESSING & INTERPRETATION

*Advanced Geophysical Solutions
and Service.*



Seismic Acquisition Company.

Data Processing Services.

Interpretation Services.

API GEOPHYSICAL provides quality 2D and 3D and 3D/3C Seismic Acquisition Pro-cessing and Interpretation Services for the Oil and Gas Industry.

Seismic Acquisition Services: Seismic Recording Equipments:



Seismic Recorders :

- (1) I/O System Four: Portable System.(Owner).
- (1) Sercel 428 UL.
- (1) GeoTomographie:

Exploration Oil Services: Acquisition, Processing and Interpretation—Geophysics and Geologic.

The latest technology :

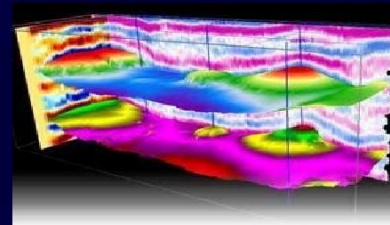
All new, high-tech equipments



**Analog and DIGITAL
Sensors 3C**



Cluster SGI



Intrepretation

Seismic Advance Data Processing and Intrepretation Services:

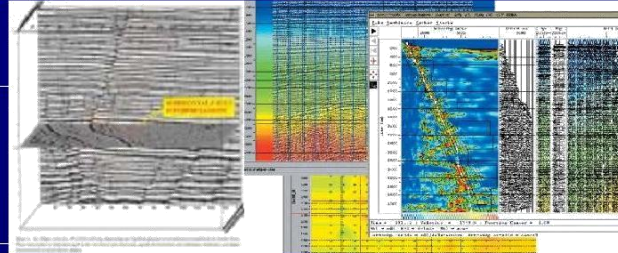
API Geophysical provides quality 2D and 3D seismic imaging services , The Center Processing supports the API field crew with an on-site portable system in remote locations and is involved in consulting services for international firms.

Processing Equipment : State-of-the-Art Equipment :: SGI Altix 350

The Center processing is currently running the ProMAX and SeisUp interac-tive processing package with 2D and 3D capabilities.

**Seismic data Acquisition is highly competitive and our goal is always
efficiently .**

FULL GEOPHYSICAL SERVICES
Acquisition, Processing and Interpretation Seismic Data

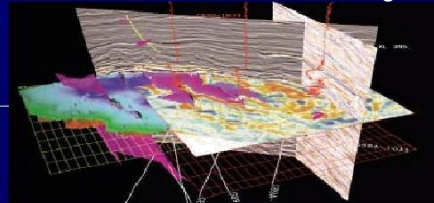


Processing Planning and QA & QC Software:
 ProMax.
 SeisUp .
3d Design:
 Mesa
 Onmi

3D Grid

Q.C Field Brute Stack

Field Processing



**Drilling Man Portable Equipments
 And Light Weight Ardco Buggy Drill
 Shothole drilling**

**Full Intrepretation:
 Geographic package**



**Surveying and Geodetic
 Equipment**

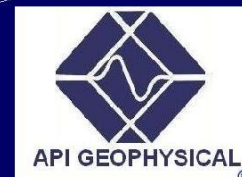
Trimble Series 5700 RTK/PP.
 Total Stations Topcon and Leika.
 Software : GPSeismic.

QHSE

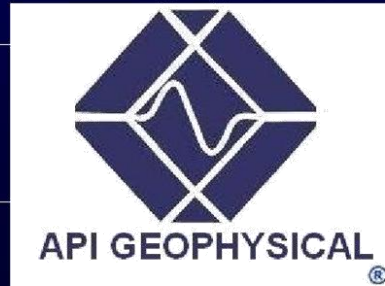


Dynamite and heliportable capabilities :
Full Digital Brochure:
[http:// www.apigeophysical.com](http://www.apigeophysical.com)

“See Results”



Full Geophysical Company



<http://www.apigeophysical.com>

API Operations: Calle No. 100 8A-55, Torre C, Piso 10,
Of: 1005

PBX: 621 02 97

Contact: contacto@apigeophysical.com

Bogota. D.E.
South America